

Painting Monet's Waterlily Pond



Materials: Large paper (blue, green, or white), cotton balls or sponge, paper plate, tempera or acrylic paint (blue, yellow, and white), paint brush, green construction paper, scissors, glue

Directions:

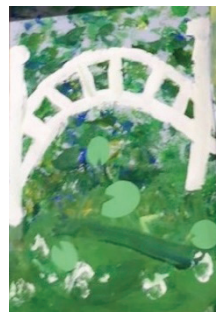
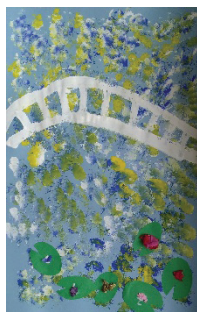
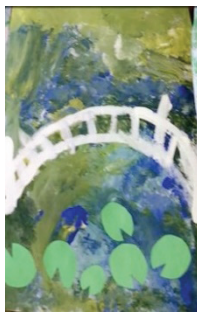
1. Pour equal amounts of blue, white, and yellow paint onto your paper plate.
2. Using the sponge (or cotton ball) as your paint brush, dip into each of the colors so that they are all on your sponge at the same time.

Do you know what color is made by mixing blue and yellow?

3. Press the paint dipped sponge onto your large paper, stamping it all over, until your paper is full of color. Feel free to stamp the same spot more than once and overlap!
4. Re-dip your sponge in all three colors as often as you need in order to cover your whole paper.

Notice all of the different blues, greens, and yellows that mix on your paper every time you stamp the sponge.

5. Set your large paper aside to dry.
6. Using green construction paper, draw circles and ovals of various sizes and cut out.
7. Carefully use your scissors to cut a small wedge out of the side of your ovals and circles. Now they are lily pads!
8. Glue your lily pads along the bottom half of your painting.
9. Using white paint and a paint brush, draw two arches across your page with straight vertical lines between them to create a bridge over the pond.



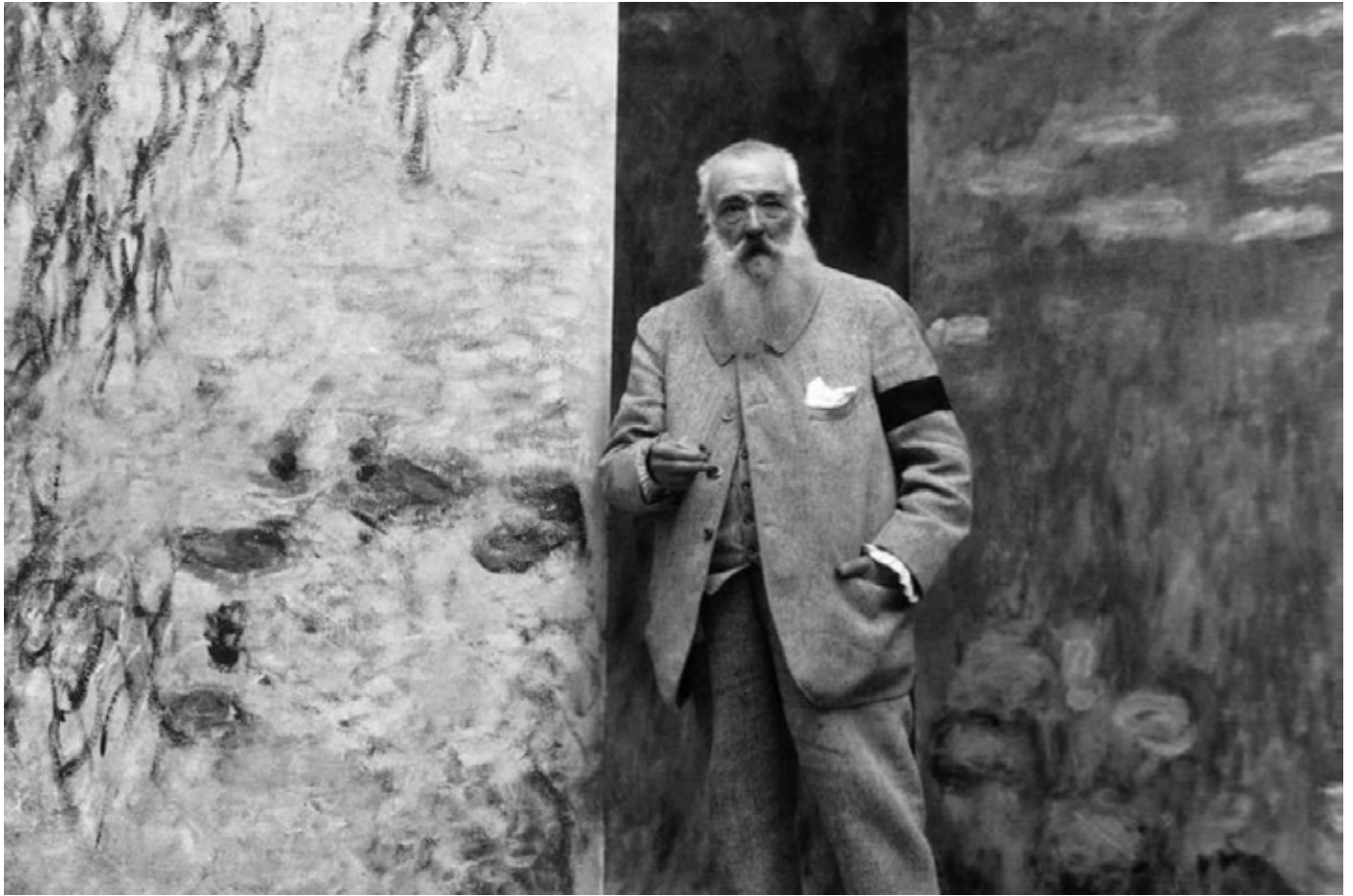
CHESTER COUNTY ART ASSOCIATION

610-696-5600

www.chestercountyarts.org

Lesson Plan by CCAA Education Planner Casey Egan. Consider the following summer camps:

- Masters of Art (grades 3-5), July 6 - July 10, 12:45 to 4PM
- Messy is Marvelous (grades K-2), July 20 - July 24, 12:45 to 4PM



Claude Monet

Claude Monet was born on November 14th, 1840 in Paris, France. Monet was a founder of the French Impressionist painting movement and well known for his plein air landscape painting. The term "Impressionism" is derived from the title of his painting *Impression, Soleil Levant* (*Impression, Sunrise*), which was exhibited in 1874 in the first of the independent exhibitions mounted by Monet and his associates as an alternative to the Salon de Paris. From 1883, Monet lived in Giverny, where he began painting the lily ponds that would become the subjects of his best-known works. He began painting the water lilies in 1899, first in vertical views with a Japanese bridge as a central feature and later in the series of large-scale paintings. Monet passed away on December 5th, 1926 at the age of 86.